

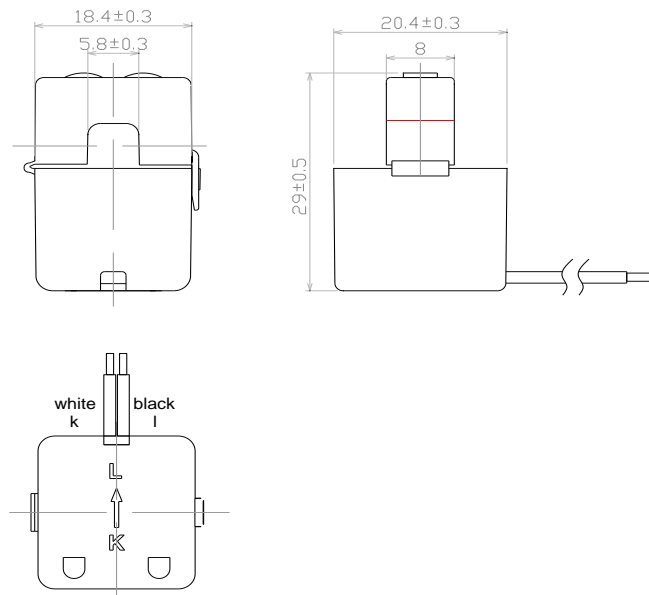
- Standard Input Current 0.1-25A
- Frequency 50Hz — 400Hz
- Standard accuracy 0.5,1
- Operating Temp. -40°C to +70°C
- ANSI C57.13 and IEC60044-1 Standards



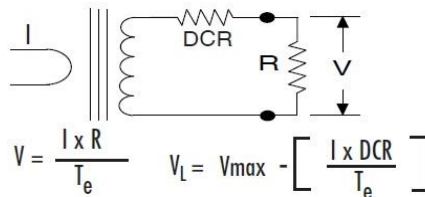
Electrical Specifications @ 25°C

P/N	Input Current (A)	Available Outputs		Insulation Voltage
		Current (mA)	Voltage (V)	
PECS06-05	5	5, 10, 20, 33.3	0.25 and 0.33	4000
PECS06-10	10			4000
PECS06-15	15			4000
PECS06-20	20			4000
PECS06-25	25			4000

Mechanical Dimensions: (mm)



Schematic



Note: Before installation, safety precautions must be followed by licensed professional. Never energize primary unless short circuited terminals or burden connected to secondary.

PRODUCT P/N: PECS06-XX

REV: 00-09/13/17

TUSTIN OFFICE:

15991 Red Hill Avenue, Suite #102, Tustin,
California 92780 USA
Tel:+1-714-460-0718 Fax:+1-714-460-0728
<http://www.palnova.com>

Milpitas OFFICE:

500 Yosemite Drive,
Milpitas, CA. 95035 USA
Tel:+1-408-855-8866 Fax:+1-408-855-8868