

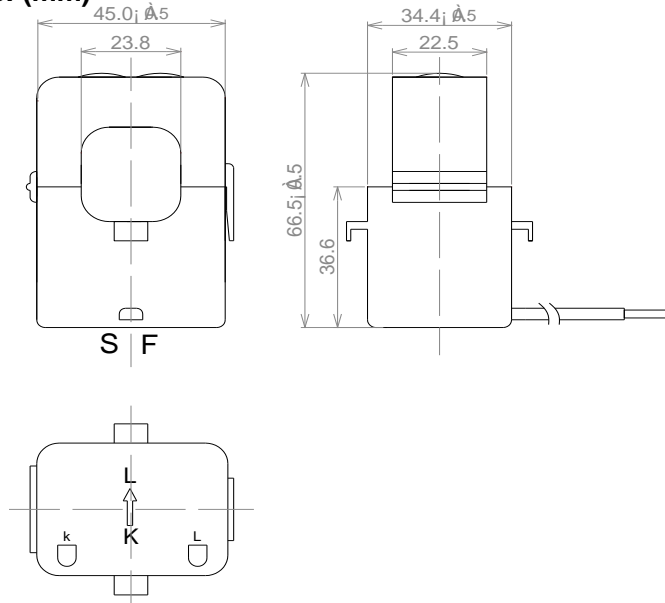
- Standard Input Current 5-300A
- Frequency 50Hz — 400Hz
- Standard accuracy 0.5,1
- Operating Temp. -40°C to +70°C
- ANSI C57.13 and IEC60044-1 Standards



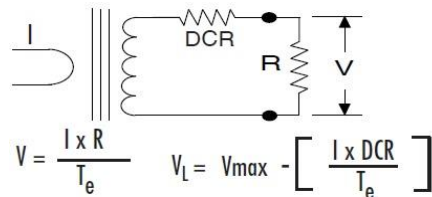
### Electrical Specifications @ 25°C

P/N	Input Current (A)	Available Outputs		Insulation Voltage
		Current (mA)	Voltage (V)	
PECS24-100	100	20, 33.3, 40, 50, 100, 1000, 5000	0.25, 0.333, 0.5, 1.0, 2.0	4000
PECS24-150	150			4000
PECS24-200	200			4000
PECS24-250	250			4000
PECS24-300	300			4000

### Mechanical Dimensions: (mm)



### Schematic



Note: Before installation, safety precautions must be followed by licensed professional. Never energize primary unless short circuited terminals or burden connected to secondary.

PRODUCT P/N: PECS24-XX

REV: 00-09/13/17

#### TUSTIN OFFICE:

15991 Red Hill Avenue, Suite #102, Tustin, California 92780 USA

Tel:+1-714-460-0718 Fax:+1-714-460-0728

<http://www.palnova.com>

#### Milpitas OFFICE:

500 Yosemite Drive, Milpitas, CA. 95035 USA

Tel:+1-408-855-8866 Fax:+1-408-855-8868